

1. GENERAL INFORMATION

1.1 Cohort of Intakes and readership

This programme booklet is the definitive programme document for the 2011/12 cohort, and particularly for those students who enter this programme by following the HKALE system. It is also the definitive programme document for those non-local students from Chinese Mainland or countries which have an education system different from the current Hong Kong system who entered this programme in 2010/11. These non-local students are required to study a one-year Foundation Curriculum on top of the normal requirements for a 3-year undergraduate degree programme as specified in this programme booklet. They are required to complete a total of 132 credits, within 4 years nominal, to attain the degree award. In addition to this programme booklet, these students should refer to the Foundation-Year Curriculum which is specially designed and approved by the University Senate. Just in case any updated information is necessary after the publication of this booklet, students are requested to refer to the URL <http://www.eie.polyu.edu.hk/prog/beng.html> for the most updated information. Should any discrepancy between the contents of the booklet and University regulations arise, University regulations always prevail.

1.2 Programme Information

Title of Programme	Bachelor of Engineering (Honours) Degree in Electronic and Information Engineering
Host Department	Department of Electronic and Information Engineering (EIE)
Programme Structure	Credit-based
Final Award	
Full-time, Sandwich, and CES modes:	BEng(Hons) in Electronic and Information Engineering 電子及資訊工程學(榮譽)工學士
Double Degree mode:	BEng(Hons) in Electronic and Information Engineering 電子及資訊工程學(榮譽)工學士 and 及 Bachelor of Science (Honours) in Engineering Physics 工程物理學(榮譽)理學士學位
Professional Recognition	This programme satisfies the academic requirements for Corporate Membership of the Hong Kong Institution of Engineers (HKIE).

Modes of attendance and total credits for graduation

For students who enter this programme by following a local Advanced-level education system:

Mode of Attendance and Duration	Full-time mode:	3 years nominal, 6 years maximum
	Sandwich mode:	4 years nominal, 7 years maximum
	CES (Cooperative Education Scheme) mode:	3½ years nominal, 7 years maximum
	Double Degree mode:	4 years nominal, 8 years maximum
	Double Degree with Sandwich mode:	5 years nominal, 8 years maximum
Total Credits for Graduation	Academic credits:	100 (for Full-time, Sandwich and CES modes) 138 (for Double Degree mode)
	Training credits:	13 (for all modes) (plus 1 Work-Integrated Education training credit for all modes)

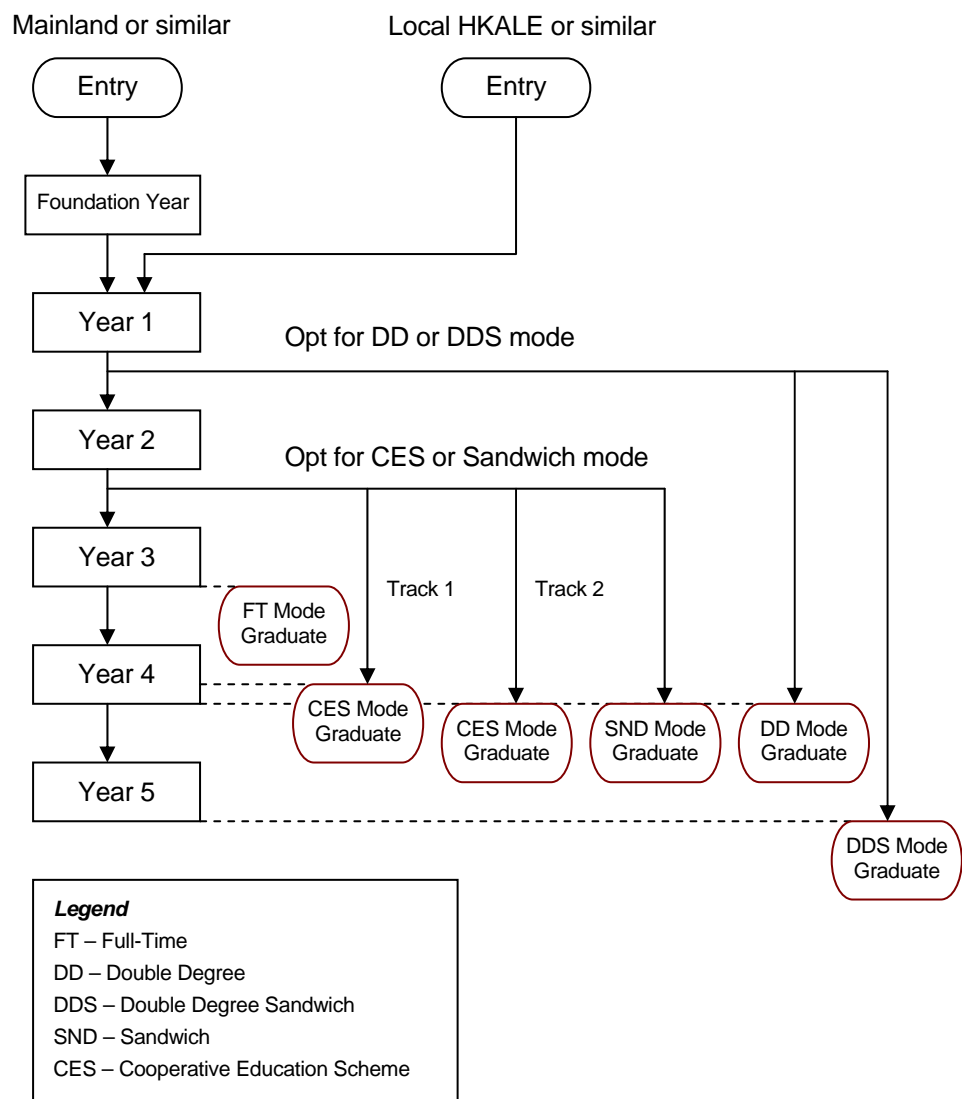
For students who are required to study the Foundation-Year Curriculum:

Mode of Attendance and Duration	Full-time mode:	4 years nominal, 8 years maximum
	Sandwich mode:	5 years nominal, 8 years maximum
	CES (Cooperative Education Scheme) mode:	4½ years nominal, 8 years maximum
	Double Degree mode:	5 years nominal, 8 years maximum
	Double Degree with Sandwich mode:	6 years nominal, 8 years maximum
Total Credits for Graduation	Academic credits:	132 (for Full-time, Sandwich and CES modes) 170 (for Double Degree mode)
	Training credits:	13 (for all modes) (plus 1 Work-Integrated Education training credit for all modes)

1.3 Modes of Attendance

The following information about the various modes of study apply to students who enter the programme either after having finished the Foundation Year, or through the local HKALE system or similar. The different years of the various modes of study are referred to as *Foundation Year*, *Year 1*, *Year 2*, *Year 3*, *Year 4* and *Year 5*.

All students will study a common curriculum in Year 1. After Year 1, they may choose a particular mode of study according to their interest and planning, which is subject to the places available. A mode of study is characterized by the credits and subjects required and the progression pattern in Year 1 to Year 5. There are five possible modes of study, namely Full-time (FT) mode, Sandwich (SND) mode, Cooperative Education Scheme (CES) mode, Double Degree (DD) mode, and Double Degree Sandwich (DDS) mode, as follows:



Full-time mode

Under the Full-time mode, the students will normally pursue their study by going through Year 1, Year 2, and Year 3 in full time and then graduate at the end of Year 3 after having satisfied all programme requirements.

Sandwich mode

Under the Sandwich mode, the students will pursue Year 1 and Year 2 study in full time, and then engage in industrial training in Year 3. During the industrial training year, the students may choose to study one subject each semester. After the industrial training year, the students will pursue study in Year 4 in full time again. Normally the students will graduate at the end of Year 4 after having satisfied all programme requirements.

Cooperative Education Scheme mode

Under the CES mode, the students will pursue Year 1 and Year 2 of study in full time. From Semester 3 of Year 2 up to Semester 1 of Year 4, the students will engage in industrial training while concurrently pursuing study in the University in day-release mode (one day leave per week) given by the employer. In the “Track 1” route of the CES mode, the students will also undertake a job-related Honours project during the industrial training period. Normally the students will graduate at the end of the first semester of Year 4 after having satisfied all programme requirements. Should the students prefer to take the Honours project after Year 3, he/she will study in the “Track 2” route and will normally graduate at the end of Year 4.

Double Degree mode

After Year 1, students may choose to embark on the Double Degree mode of study. Due to limited quota, students will be selected into the Double Degree mode according to their suitability. The normal duration of the Double Degree mode is four years. The first three years will be UGC-funded while the fourth year will be self-financed. On successful completion of the Double Degree mode of study, the students will obtain two awards, namely Bachelor of Engineering (Honours) in Electronic and Information Engineering and Bachelor of Science (Honours) in Engineering Physics.

In case the students choose to terminate their study after Year 3, they will normally obtain the Major in Electronic and Information Engineering and Minor in Engineering Physics awards, the details of which are specified in Sections 28 and 29.

Double Degree Sandwich mode

The normal duration of the Double Degree Sandwich mode is five years. Students enter the Double Degree mode of study in Year 2. After Year 2, students engage in industrial training for one year and then return to the Programme to study for the remaining two years to obtain the double degrees. During the industrial training year, students may choose to study one subject each semester.

In case the students choose to terminate their study in Year 4 (i.e. the year after training), they will normally obtain the Major in Electronic and Information Engineering and Minor in Engineering Physics awards, the details of which are specified in Sections 28 and 29.